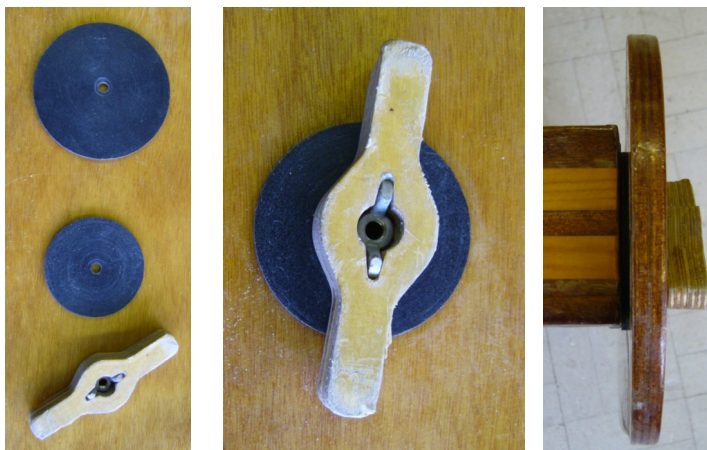
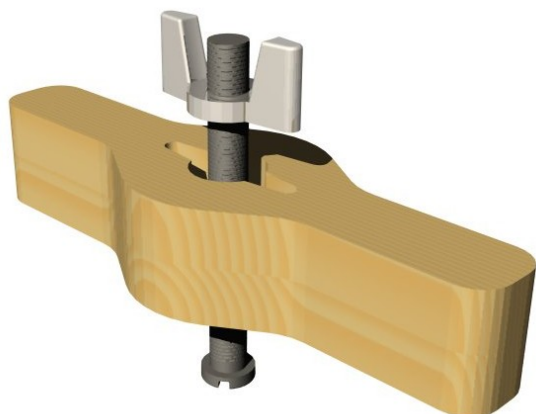


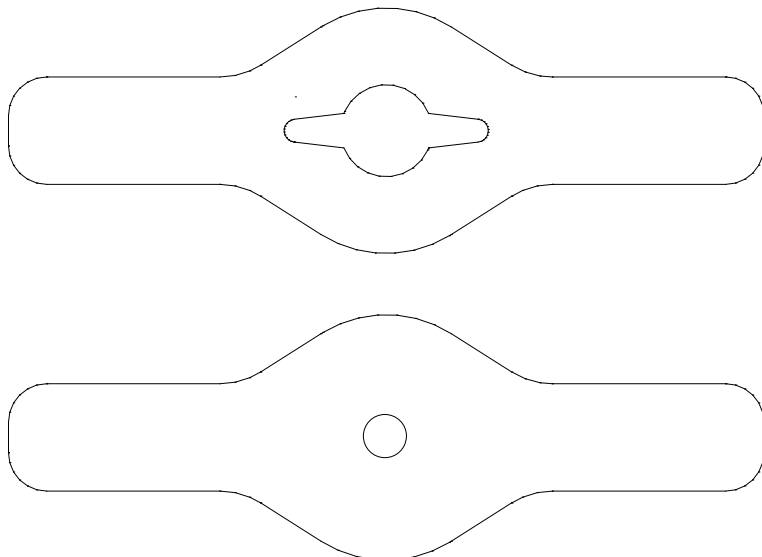
Lee board handle

Our attempt at sailing our Mill Creek 16.5 was taken at around Christmas time. The air temperature was a little above freezing point, and we found it very difficult to adjust the wingnut on the lee board. Since necessity is often the mother of invention, we came up with the following solution:

We both work in a school, in the technology department, and it was simple to produce this design on the school CAM machine. The handles has been produced in two layers. A quick dab of epoxy resin, and the job was done. It's had a bit of a bashing, but still does the job admirably.



Available files:



www.roulson.net/leeboard/leeboard.pdf

We used 9mm birch plywood and liberally coated it in epoxy resin after glueing it together. The wingnut just drops into the hole in the centre and wedges itself in.

The washers are made from scraps of Foamex PVC, a rigid PVC sheet (left over from a student project).

They grip fairly well, but allow the lee-board to be adjusted.